

The Q Sheet

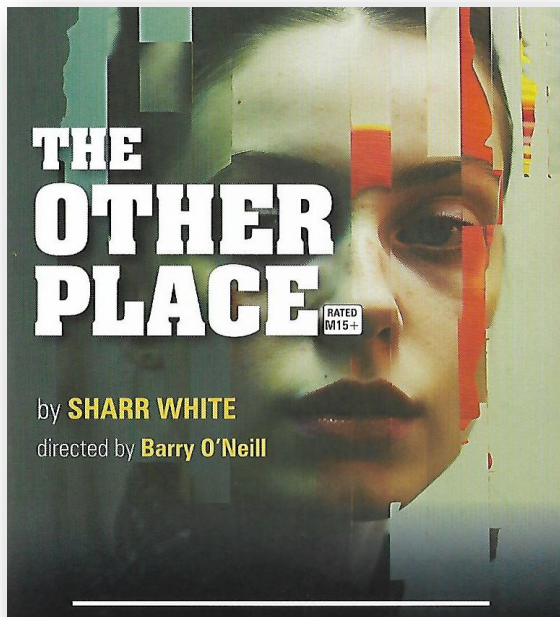
April 2026



Proud supporter of
The Victorian Drama League.

Newsletter of
Mordialloc Theatre Company Inc
mordialloctheatre@gmail.com
PO Box 80, Mentone, 3194
Bookings 9566 4440

OUR NEXT PRODUCTION



Brilliant neurologist, Juliana Smithton, is delivering a lecture promoting a blockbuster drug she has researched and developed, when she glimpses an unexpected guest in the audience who becomes a nervous distraction.

Humour is her defence mechanism as she faces a potential health crisis at a time when she suspects her husband, Ian, is having an affair.

Juliana reaches out to her estranged daughter, Laurel, but Ian's wariness and scepticism clashes with Juliana's desperate need for reconciliation.

As her marriage heads to a crisis point, Juliana is drawn to revisit "the other place", a house full of memories which reveal intriguing insights that help her to come to terms with her present challenges.

This beautiful play mixes pathos and humour as it invites us to unravel a mystery of blurred truths and memories, in an intriguing fast-paced drama.

**HAVE YOU BOOKED YOUR TICKETS YET?
TWO WEEKS UNTIL THIS PLAY OPENS**

Season Dates: MAY 7, 8, 9, ** 10, *, 13, 14, 15, & 16**

Bookings now open: <https://mordialloctheatre.com.au/> or call 9556 4440.

The cast of "The Other Place"



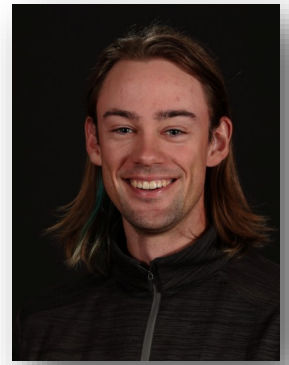
Kate Bowers
as JULIANA



Stephen Shinkfield
as IAN

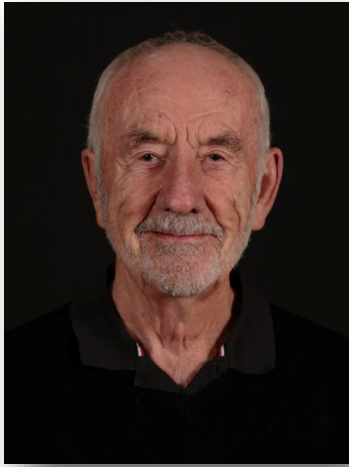


Jessica Symonds
as THE WOMAN



Nicholas Bowers
as THE MAN

THE OTHER PLACE



Director
Barry O'Neill

Director's Notes:

THE OTHER PLACE had its off-Broadway premier in 2011, its Australian Premiere in 2013 and in 2014 I was fortunate to present its Australian non-professional Premiere with The Basin Theatre.

I am now indebted to Mordialloc Theatre Company for giving me an opportunity to bring this stunning play to its audiences.

I am thrilled to bring the brilliant on stage talents of Kate, Stephen, Jessica and Nick, together with a remarkable backstage crew; and acknowledge Kate for her outstanding support as my assistant director.

My thanks also to my wife Rhonda for her patience and endless encouragement.

ABOUT THE PLAY



Described by critics as “thought-provoking” and “beautifully complex,” this mind-bending thriller-drama delves into the fragile nature of memory and perception. Told through a gripping non-linear structure, it unfolds like a puzzle—inviting audiences to piece together its mysteries in real time.

Blending the tension of a psychological thriller with the emotional weight of an intimate family drama, the play operates as a compelling “puzzle box,” where every revelation reshapes what came before.

With its razor-sharp dialogue, high-stakes intensity, and profound emotional depth, it’s a must-see theatrical experience—one that challenges the mind while striking deeply at the heart, often leaving audiences genuinely moved.



DON'T MISS IT!

Volunteers

The Mordialloc Theatre Company would not be able to operate without the invaluable contributions from our volunteers.

Set Build

If anyone is interested in being part of our set-building crew for our upcoming production, *"he Other Place* please let us know.

We will be changing our regular Saturday build because of ANZAC Day, so, instead, we will be bumping in on Sunday 26th. April starting at 10.30am and then Monday and Tuesday both starting at 9.30am. If anyone can assist, even for a couple of hours, please contact us at - mordialloctheatre@gmail.com

All volunteers will receive a complimentary ticket to the production and lunch on bump-in days.

Front-Of-House

Thanks to Lyn Laister for organising the Front-Of-House roster for *The Other Place*.

And a big thank you to our wonderful FOH team who have volunteered to assist-

Leigh Thompson , Shona Smith, Sheila Balis, Christine Bridge, Corinne and Martin Gibbs, Lynette Williams, Tony Hill, Jane Thomas, Annette Le Breton, Rob and Ellen Coulson, Barbara Crawford, Marjorie Winslade, Alison Campbell Rate, Judith Dillon, Janette Bywaters, Cheryl Richards, Evonne March, Eric March, Glenda McDonald, Kirsten Jansen-McMaster, Lynette Williams and Carol Shelbourn.

Your efforts are very much appreciated.

If you're interested in organising the roster for upcoming productions or being part of the FOH team, please contact us at- mordialloctheatre@gmail.com

Social Media



Please keep connecting with us on social media.
Feedback is very important to us.



The State of Community Theatre

The Victorian Drama League is undertaking some important work to help assist community theatre in Victoria to understand trends, attitudes, and obstacles that need to be addressed.

The following piece includes material reproduced with permission from the VDL,

BACKGROUND

The Victorian Drama League (The VDL) is embarking on a mission to support its member groups with strategies to work with local councils and Victorian State Government, with the aim of strengthening their support of community theatre. Research was required to underpin these strategies, providing evidence of the need for community theatre's ongoing existence and viability.

A program of research was used to gather data and insights that can inform dialogue with local councils and government more broadly regarding their support for community theatre.

An initial survey among office bearers of member theatre companies of The VDL was conducted early in 2025, highlighting some of the key concerns that community theatre companies hold and the challenges they face. The second phase (and the subject of this report) was to elicit an understanding among those actively engaged in community theatre.

RESEARCH AIMS

The overarching aim of this research was to determine the impact that community theatre delivers to the Victorian community. The specific research objective for this survey was to determine the impact on all those who actively participate in community theatre.

Key insights from member companies*

- While most companies are staging at least 4 or 5 productions per year, there is a lack of productions aimed at youth.
- Subscribers, patrons and volunteers are over-represented in the 45-64 year age group.
- Each company liaises with just one council. The relationship with council is generally 'mediocre' (6.76 on a 10-point scale) with the lack of control over their performing space and costs, causing relational friction.
- While most companies are optimistic about the future, they face significant challenges and are looking to their council for much stronger support. In particular, financially (lowered fees, grants), physically (with theatre assets), strategically (in council planning) and by way of recognition (even having representatives attending shows).

VOLUNTEERS ALWAYS WELCOME



Have you ever wondered about working with a theatre company?

The Mordialloc Theatre Company is celebrating it's 80th year. That's 80 years of mounting plays for the community. Over that time we've had so many volunteers help with -

- *Building sets: skilled or unskilled.
- *Working Front-of-House: greeting patrons, preparing and offering refreshments.
- *Wardrobe: sourcing, adjusting or transporting.
- *Creating, modifying or transporting props- large or small.
- *Stage managing or assisting crew.
- *Sound and Lighting operation.
- *Marketing skills.
- *Distributing flyers.

If you think you might be able to assist as a volunteer in any of these roles, or if you have other skills that you could contribute, or if you would just like more information, contact us at mordialloctheatre@gmail.com

Williamstown Little Theatre Milestone

"80 Wonderful Years of Williamstown Little Theatre"

This year marks a magnificent milestone for Williamstown Little Theatre. Since starting in 1946, they have presented eight decades of quality theatre and many will know their reputation as one of Melbourne's finest community theatre groups.

To recognise and celebrate 80 wonderful years, they are holding a Birthday Party in Williamstown on Saturday May 23rd and they'd love past, present and future theatre lovers to come along and join in the festivities.

The tickets are on sale now and are strictly limited by the capacity of the Royal Victorian Motor Yacht Club's ballroom. Jump on quickly as more than half the tickets have been sold already.

Tickets are \$80 (plus fees) and includes a three-course meal and entertainment. Drinks are available at bar prices. Also, there will be a raffle on the night with some great prizes.

Take the opportunity to dress in your finest theatre-goer ensemble. Bring your dancing shoes, as there will be a live band.

One last thing. If you have a wonderful story to share from the history of WLT, email Les Hart (lhart@wlt.org.au) and they will try to get an opportunity for all to hear.

[Click here to get your tickets](#) or scan the QR Code below for more details.



WHAT'S ON

Malvern Theatre Co. Inc.

The Visit

17 April – 2 May 2026

www.malvernthatre.com.au

Lilydale Athenaeum Theatre Co. Inc.

The Female Of The Species

23 April – 9 May 2026

www.lilydalesathenaem.com.au

Heidelberg Theatre Company

The Girl On The Train

25 April – 9 May 2026

www.heidelbergtc.org.au

Eltham Little Theatre Inc.

A Tomb With A View

1–16 May 2026

www.elthamlittletheatre.org.au

The Basin Theatre Group Inc.

Switzerland

16–26 April 2026

www.basinthatre.au

The 1812 Theatre Ltd.

Summer Of The Aliens

9 April – 2 May 2026

www.1812theatre.com.au

Beaumaris Theatre Inc

Two Ladies

22 May – 6 June 2026

www.beaumaristheatre.com.au

Brighton Theatre Company

Wicked Sisters

15– 30 May 2026

www.brightontheatre.com.au